

MARKET HISTORY

Includes data through 10/2010

Montgomery County, PA Single-Family



Market History Report

The Market History Report details current and historical statistical information for single-family listings recorded within TREND. This statistical report is organized by county and contains valuable month-over-month, year-over-year statistical information for each of the last 10 years. The Market History Report details activity in a particular market over a 10-year period – from where it's been to where it's at now. The easy-to-read month-over-month, year-over-year chart and graph enables you to clearly identify the year-over-year changes while accounting for seasonal and market trends.

Utilizing the report allows you to gain a better understanding of your market. This will give you new insights and increase your company's value when working with consumers. This powerful report is provided exclusively to TREND members.

Contents

Total Inventory.....	3
Inventory Accumulation	4
Pending Units	5
Settled Units	6
Total Settled Volume	7
Median Settled Price.....	8
Average Settled Price	9
Average Settled Price / Original Price.....	10

Definitions

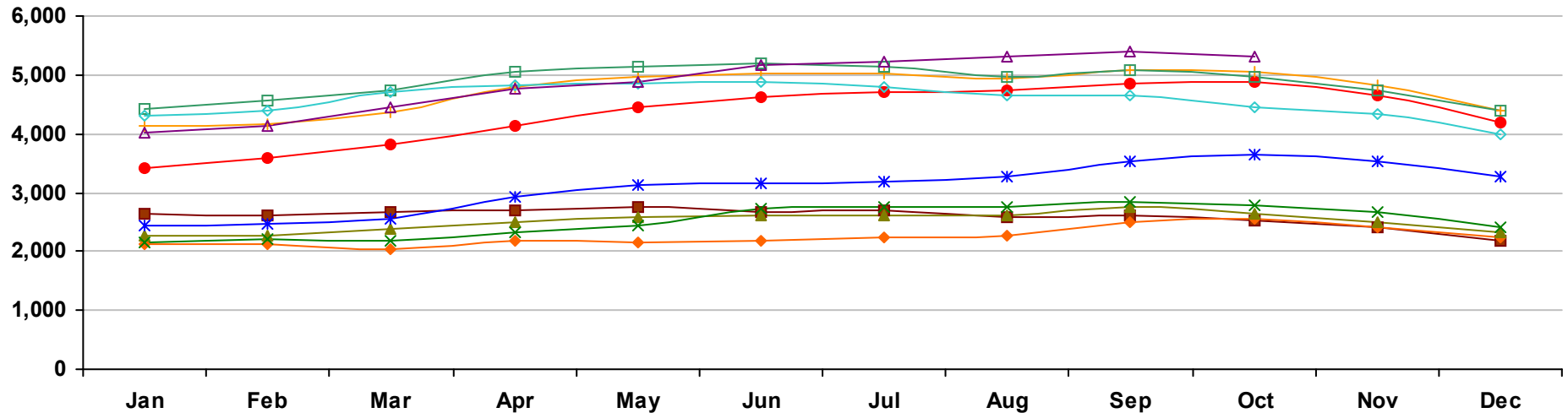
Total Inventory	The number of active single-family listings on the market on the last day of the specified month.
Inventory Accumulation	The number of months it would take to exhaust the current supply of single-family listings at the current absorption rate.
Absorption Rate	The average number of single-family listings sold in the market per month over the previous 12 months.
Pending Units	The number of single-family listings with Pending dates during the specified month.
Settled Units	The number of single-family listings with Settled dates during the specified month.
Total Settled Volume	The total dollar volume of single-family listings that have settled during the specified month.

Median Settled Price	The median price that single-family listings settled for during the specified month. Determined by arranging all Settled Listings in numerical order by price and then selecting the middle value.
Average Settled Price	The average price that single-family listings settled for during the specified month. Determined by dividing the Total Settled Volume by the number of Settled Listings.
Average Settled Price / Original Price	The average percentage of the Original Price that single-family listings settled for during the specified month. This number is determined by dividing the Settled Price by the Original Price for every listing, summing them and then dividing by the number of settled listings. TREND excludes listings if the Settled Price is greater than 150 percent or less than 50 percent of the Original Price. This ensures the percentage is more representative of listings in the market area.
Percent Change	The change in value as compared to the same month of the previous year. Indicated by +/-0.0%.

Notes on Statistics

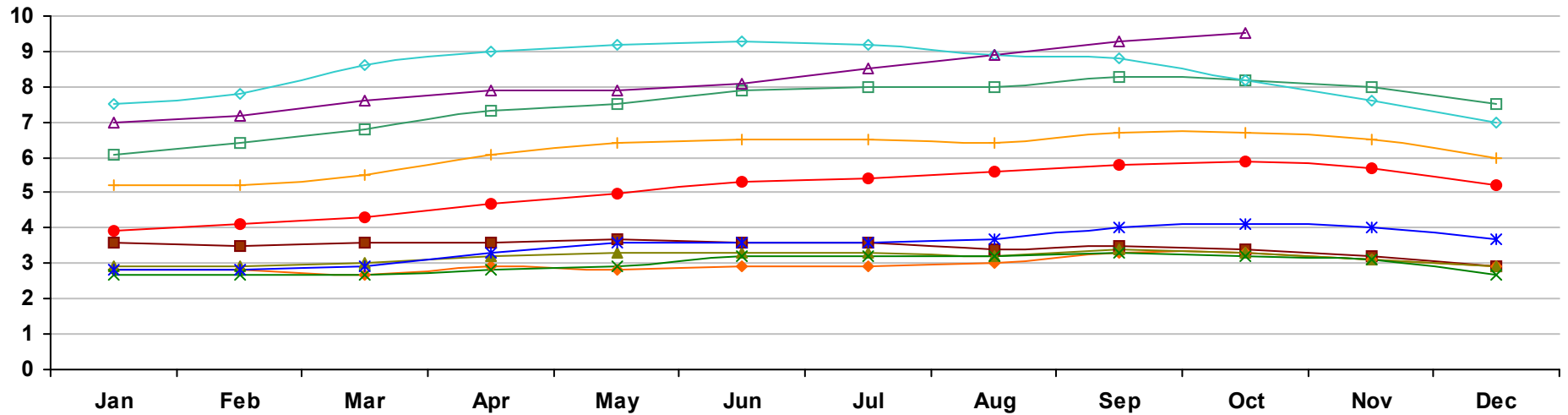
- All statistics are from TREND's monthly Residential Activity Reports. Due to the fluid nature of MLS data, insignificant statistical variations may occur with regard to sales activity between the various TREND reports.
- Mobile homes and condominiums are excluded from these statistics.
- This report includes information on listings and transactions facilitated through TREND and does not reflect the total number of listings and transactions of a given market area.
- All monetary statistics are rounded to the nearest \$10.

Montgomery County, PA - Single-Family - Total Inventory



	Jan	Feb	Mar	Apr	May	Jun	Jul	Aug	Sep	Oct	Nov	Dec
2001	2,642 -15.7%	2,606 -17.6%	2,676 -16.2%	2,711 -16.5%	2,749 -17.3%	2,680 -19.6%	2,688 -17.8%	2,588 -17.2%	2,607 -15.4%	2,536 -16.1%	2,404 -16.5%	2,179 -18.2%
2002	2,132 -19.3%	2,135 -18.1%	2,035 -24.0%	2,186 -19.4%	2,144 -22.0%	2,180 -18.7%	2,235 -16.9%	2,270 -12.3%	2,487 -4.6%	2,546 0.4%	2,406 0.1%	2,241 2.8%
2003	2,257 5.9%	2,268 6.2%	2,372 16.6%	2,486 13.7%	2,570 19.9%	2,609 19.7%	2,603 16.5%	2,599 14.5%	2,747 10.5%	2,645 3.9%	2,493 3.6%	2,331 4.0%
2004	2,160 -4.3%	2,205 -2.8%	2,189 -7.7%	2,326 -6.4%	2,436 -5.2%	2,720 4.3%	2,742 5.3%	2,759 6.2%	2,849 3.7%	2,774 4.9%	2,663 6.8%	2,400 3.0%
2005	2,447 13.3%	2,466 11.8%	2,563 17.1%	2,941 26.4%	3,143 29.0%	3,163 16.3%	3,192 16.4%	3,271 18.6%	3,529 23.9%	3,649 31.5%	3,536 32.8%	3,261 35.9%
2006	3,427 40.0%	3,578 45.1%	3,816 48.9%	4,143 40.9%	4,461 41.9%	4,617 46.0%	4,704 47.4%	4,731 44.6%	4,851 37.5%	4,870 33.5%	4,653 31.6%	4,178 28.1%
2007	4,128 20.5%	4,167 16.5%	4,375 14.6%	4,787 15.5%	4,977 11.6%	5,028 8.9%	5,014 6.6%	4,931 4.2%	5,080 4.7%	5,040 3.5%	4,824 3.7%	4,389 5.1%
2008	4,423 7.1%	4,578 9.9%	4,750 8.6%	5,048 5.5%	5,136 3.2%	5,182 3.1%	5,142 2.6%	4,953 0.4%	5,080 0.0%	4,978 -1.2%	4,737 -1.8%	4,378 -0.3%
2009	4,293 -2.9%	4,393 -4.0%	4,695 -1.2%	4,809 -4.7%	4,853 -5.5%	4,877 -5.9%	4,793 -6.8%	4,642 -6.3%	4,652 -8.4%	4,458 -10.4%	4,337 -8.4%	3,982 -9.0%
2010	4,015 -6.5%	4,132 -5.9%	4,462 -5.0%	4,773 -0.7%	4,868 0.3%	5,166 5.9%	5,225 9.0%	5,308 14.3%	5,411 16.3%	5,304 19.0%		

Montgomery County, PA - Single-Family - Inventory Accumulation

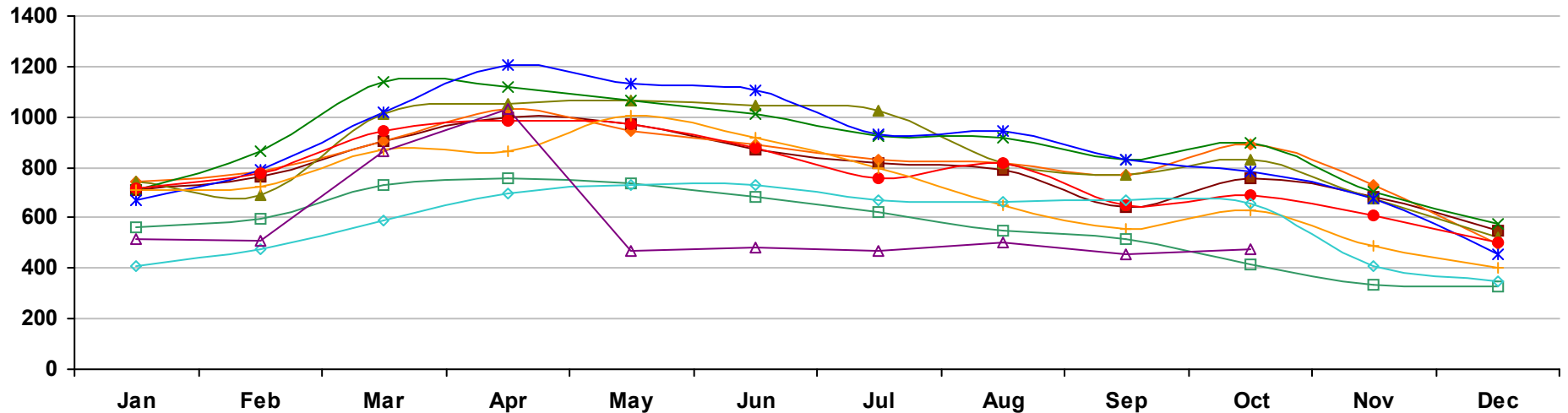


	Jan	Feb	Mar	Apr	May	Jun	Jul	Aug	Sep	Oct	Nov	Dec
■ 2001	3.6 -12.2%	3.5 -16.7%	3.6 -14.3%	3.6 -16.3%	3.7 -15.9%	3.6 -20.0%	3.6 -20.0%	3.4 -20.9%	3.5 -16.7%	3.4 -17.1%	3.2 -17.9%	2.9 -19.4%
◆ 2002	2.8 -22.2%	2.8 -20.0%	2.7 -25.0%	2.9 -19.4%	2.8 -24.3%	2.9 -19.4%	2.9 -19.4%	3.0 -11.8%	3.3 -5.7%	3.3 -2.9%	3.1 -3.1%	2.9 0.0%
▲ 2003	2.9 3.6%	2.9 3.6%	3.0 11.1%	3.2 10.3%	3.3 17.9%	3.3 13.8%	3.3 13.8%	3.2 6.7%	3.4 3.0%	3.3 0.0%	3.1 0.0%	2.9 0.0%
✕ 2004	2.7 -6.9%	2.7 -6.9%	2.7 -10.0%	2.8 -12.5%	2.9 -12.1%	3.2 -3.0%	3.2 -3.0%	3.2 0.0%	3.3 -2.9%	3.2 -3.0%	3.1 0.0%	2.7 -6.9%
✱ 2005	2.8 3.7%	2.8 3.7%	2.9 7.4%	3.3 17.9%	3.6 24.1%	3.6 12.5%	3.6 12.5%	3.7 15.6%	4.0 21.2%	4.1 28.1%	4.0 29.0%	3.7 37.0%
● 2006	3.9 39.3%	4.1 46.4%	4.3 48.3%	4.7 42.4%	5.0 38.9%	5.3 47.2%	5.4 50.0%	5.6 51.4%	5.8 45.0%	5.9 43.9%	5.7 42.5%	5.2 40.5%
+ 2007	5.2 33.3%	5.2 26.8%	5.5 27.9%	6.1 29.8%	6.4 28.0%	6.5 22.6%	6.5 20.4%	6.4 14.3%	6.7 15.5%	6.7 13.6%	6.5 14.0%	6.0 15.4%
□ 2008	6.1 17.3%	6.4 23.1%	6.8 23.6%	7.3 19.7%	7.5 17.2%	7.9 21.5%	8.0 23.1%	8.0 25.0%	8.3 23.9%	8.2 22.4%	8.0 23.1%	7.5 25.0%
◇ 2009	7.5 23.0%	7.8 21.9%	8.6 26.5%	9.0 23.3%	9.2 22.7%	9.3 17.7%	9.2 15.0%	8.9 11.3%	8.8 6.0%	8.2 0.0%	7.6 -5.0%	7.0 -6.7%
△ 2010	7.0 -6.7%	7.2 -7.7%	7.6 -11.6%	7.9 -12.2%	7.9 -14.1%	8.1 -12.9%	8.5 -7.6%	8.9 0.0%	9.3 5.7%	9.5 15.9%		

Market History Report © Copyright 2010 TREND. Compiled on 11/10/2010. Information deemed reliable, but not guaranteed. Contact TREND for reprint permission.

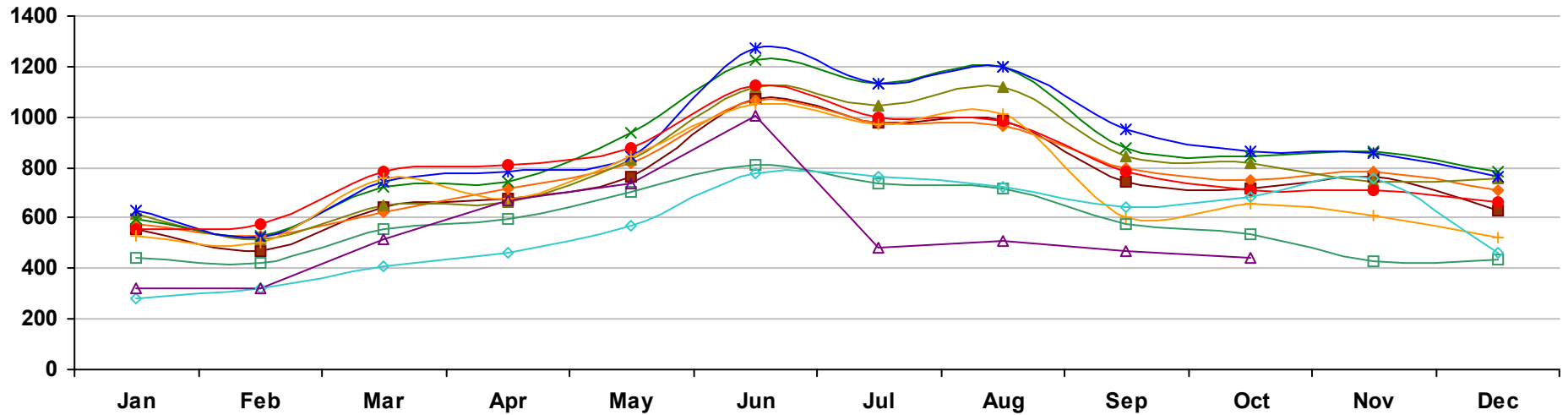
TREND • 660 American Avenue, Suite 203 • King of Prussia, PA 19406 • 1-877-330-9900 • www.trendmls.com

Montgomery County, PA - Single-Family - Pending Units



	Jan	Feb	Mar	Apr	May	Jun	Jul	Aug	Sep	Oct	Nov	Dec
2001	712 20.3%	761 12.7%	903 -12.3%	996 4.7%	973 9.8%	874 -0.2%	820 8.3%	790 -0.5%	644 -15.0%	760 -1.3%	680 4.0%	550 29.4%
2002	743 4.4%	784 3.0%	904 0.1%	1,033 3.7%	945 -2.9%	889 1.7%	829 1.1%	817 3.4%	773 20.0%	892 17.4%	733 7.8%	495 -10.0%
2003	742 -0.1%	690 -12.0%	1,012 11.9%	1,055 2.1%	1,067 12.9%	1,048 17.9%	1,022 23.3%	820 0.4%	769 -0.5%	828 -7.2%	677 -7.6%	525 6.1%
2004	709 -4.4%	865 25.4%	1,140 12.6%	1,121 6.3%	1,067 0.0%	1,014 -3.2%	925 -9.5%	917 11.8%	828 7.7%	896 8.2%	704 4.0%	575 9.5%
2005	670 -5.5%	792 -8.4%	1,015 -11.0%	1,203 7.3%	1,130 5.9%	1,107 9.2%	928 0.3%	942 2.7%	830 0.2%	782 -12.7%	674 -4.3%	456 -20.7%
2006	714 6.6%	774 -2.3%	945 -6.9%	985 -18.1%	970 -14.2%	880 -20.5%	754 -18.8%	814 -13.6%	647 -22.0%	688 -12.0%	608 -9.8%	501 9.9%
2007	710 -0.6%	722 -6.7%	871 -7.8%	864 -12.3%	1,006 3.7%	915 4.0%	800 6.1%	647 -20.5%	553 -14.5%	627 -8.9%	486 -20.1%	401 -20.0%
2008	564 -20.6%	595 -17.6%	728 -16.4%	757 -12.4%	737 -26.7%	683 -25.4%	626 -21.8%	547 -15.5%	515 -6.9%	416 -33.7%	336 -30.9%	330 -17.7%
2009	407 -27.8%	474 -20.3%	589 -19.1%	695 -8.2%	729 -1.1%	727 6.4%	670 7.0%	660 20.7%	671 30.3%	658 58.2%	411 22.3%	350 6.1%
2010	518 27.3%	508 7.2%	863 46.5%	1,029 48.1%	472 -35.3%	485 -33.3%	469 -30.0%	500 -24.2%	454 -32.3%	474 -28.0%		

Montgomery County, PA - Single-Family - Settled Units

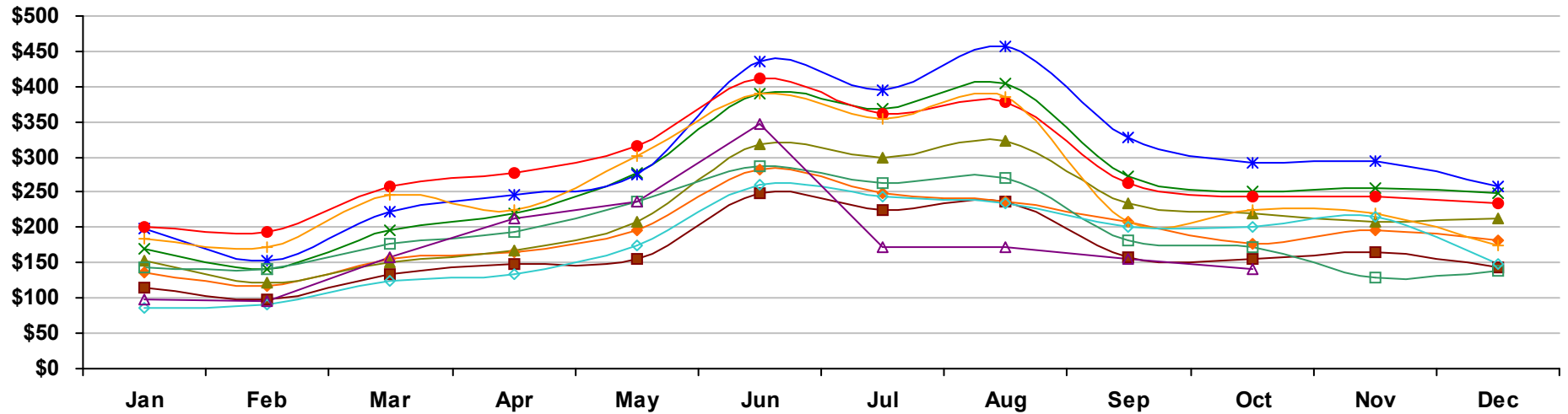


	Jan	Feb	Mar	Apr	May	Jun	Jul	Aug	Sep	Oct	Nov	Dec
2001	554 7.2%	469 5.9%	642 9.7%	676 4.5%	763 -7.1%	1,071 0.3%	980 7.6%	982 -1.8%	744 2.3%	715 -9.9%	766 5.5%	627 -0.8%
2002	578 4.3%	531 13.2%	621 -3.3%	715 5.8%	815 6.8%	1,063 -0.7%	976 -0.4%	964 -1.8%	796 7.0%	747 4.5%	782 2.1%	708 12.9%
2003	619 7.1%	519 -2.3%	649 4.5%	664 -7.1%	829 1.7%	1,122 5.6%	1,044 7.0%	1,119 16.1%	845 6.2%	819 9.6%	742 -5.1%	757 6.9%
2004	596 -3.7%	530 2.1%	725 11.7%	745 12.2%	937 13.0%	1,227 9.4%	1,135 8.7%	1,202 7.4%	877 3.8%	846 3.3%	864 16.4%	787 4.0%
2005	627 5.2%	520 -1.9%	742 2.3%	782 5.0%	841 -10.2%	1,275 3.9%	1,131 -0.4%	1,201 -0.1%	949 8.2%	864 2.1%	857 -0.8%	766 -2.7%
2006	558 -11.0%	573 10.2%	787 6.1%	809 3.5%	879 4.5%	1,126 -11.7%	995 -12.0%	987 -17.8%	787 -17.1%	712 -17.6%	709 -17.3%	660 -13.8%
2007	528 -5.4%	500 -12.7%	757 -3.8%	674 -16.7%	844 -4.0%	1,049 -6.8%	971 -2.4%	1,012 2.5%	600 -23.8%	655 -8.0%	612 -13.7%	521 -21.1%
2008	445 -15.7%	425 -15.0%	555 -26.7%	596 -11.6%	702 -16.8%	810 -22.8%	737 -24.1%	720 -28.9%	573 -4.5%	533 -18.6%	432 -29.4%	434 -16.7%
2009	280 -37.1%	324 -23.8%	408 -26.5%	459 -23.0%	571 -18.7%	776 -4.2%	765 3.8%	723 0.4%	645 12.6%	683 28.1%	758 75.5%	463 6.7%
2010	319 13.9%	322 -0.6%	516 26.5%	667 45.3%	738 29.2%	1,002 29.1%	484 -36.7%	507 -29.9%	468 -27.4%	445 -34.8%		

Market History Report © Copyright 2010 TREND. Compiled on 11/10/2010. Information deemed reliable, but not guaranteed. Contact TREND for reprint permission.

TREND • 660 American Avenue, Suite 203 • King of Prussia, PA 19406 • 1-877-330-9900 • www.trendmls.com

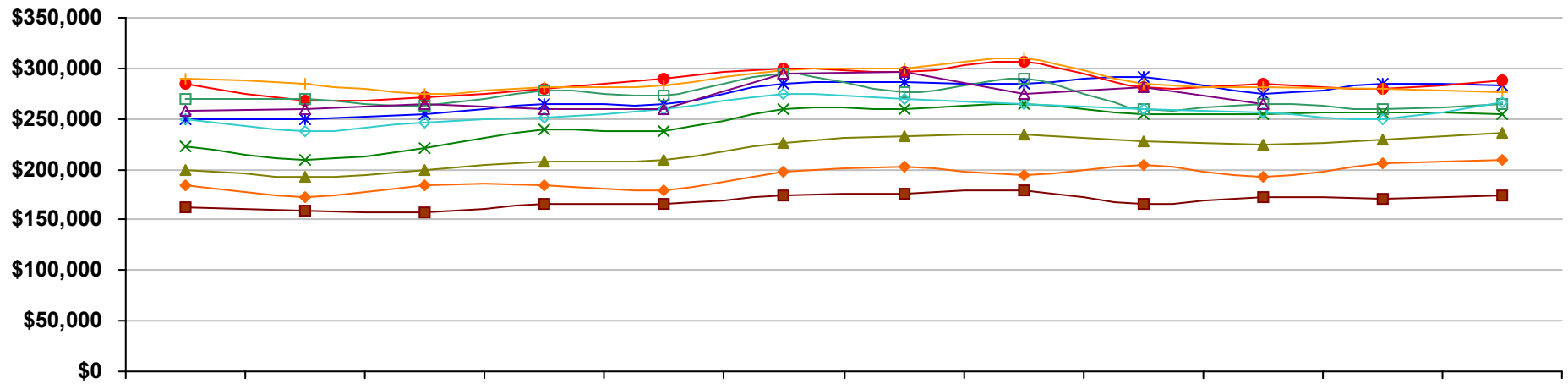
Montgomery County, PA - Single-Family - Total Settled Volume



	Jan	Feb	Mar	Apr	May	Jun	Jul	Aug	Sep	Oct	Nov	Dec
2001	\$116 10.5%	\$99 13.4%	\$133 20.7%	\$148 24.3%	\$156 0.1%	\$248 7.7%	\$226 17.9%	\$236 11.4%	\$157 12.2%	\$155 -3.3%	\$164 15.5%	\$144 8.3%
2002	\$136 17.4%	\$118 19.3%	\$155 16.4%	\$165 11.3%	\$195 25.2%	\$282 13.7%	\$249 10.1%	\$236 -0.3%	\$208 32.6%	\$178 14.8%	\$196 19.4%	\$181 26.3%
2003	\$152 11.6%	\$122 3.3%	\$151 -2.6%	\$168 1.8%	\$208 6.8%	\$319 13.0%	\$300 20.6%	\$324 37.5%	\$235 12.6%	\$219 23.4%	\$207 5.7%	\$214 18.2%
2004	\$170 11.8%	\$140 15.2%	\$196 30.0%	\$219 30.3%	\$277 32.8%	\$390 22.2%	\$368 22.6%	\$405 24.9%	\$273 16.4%	\$252 15.1%	\$255 23.1%	\$250 16.8%
2005	\$198 16.5%	\$153 9.2%	\$222 13.0%	\$247 12.9%	\$276 -0.2%	\$435 11.6%	\$394 7.0%	\$456 12.6%	\$327 19.6%	\$292 15.6%	\$294 15.1%	\$259 3.4%
2006	\$202 1.8%	\$193 25.8%	\$259 16.9%	\$278 12.3%	\$316 14.4%	\$412 -5.4%	\$361 -8.4%	\$378 -17.2%	\$263 -19.5%	\$244 -16.2%	\$243 -17.4%	\$235 -9.2%
2007	\$185 -8.5%	\$173 -10.4%	\$246 -5.2%	\$224 -19.2%	\$302 -4.3%	\$390 -5.3%	\$354 -1.9%	\$385 2.1%	\$209 -20.7%	\$226 -7.4%	\$219 -9.6%	\$174 -26.1%
2008	\$144 -22.1%	\$141 -18.2%	\$177 -28.1%	\$194 -13.3%	\$237 -21.7%	\$286 -26.7%	\$264 -25.4%	\$271 -29.8%	\$182 -12.9%	\$173 -23.7%	\$130 -40.6%	\$138 -20.6%
2009	\$86 -40.1%	\$90 -36.0%	\$125 -29.3%	\$135 -30.4%	\$175 -25.9%	\$260 -8.9%	\$245 -7.1%	\$234 -13.6%	\$200 10.3%	\$202 16.8%	\$215 64.7%	\$149 8.5%
2010	\$97 12.6%	\$96 6.1%	\$157 25.7%	\$213 57.4%	\$236 34.8%	\$347 33.2%	\$173 -29.7%	\$172 -26.4%	\$155 -22.5%	\$141 -30.2%		

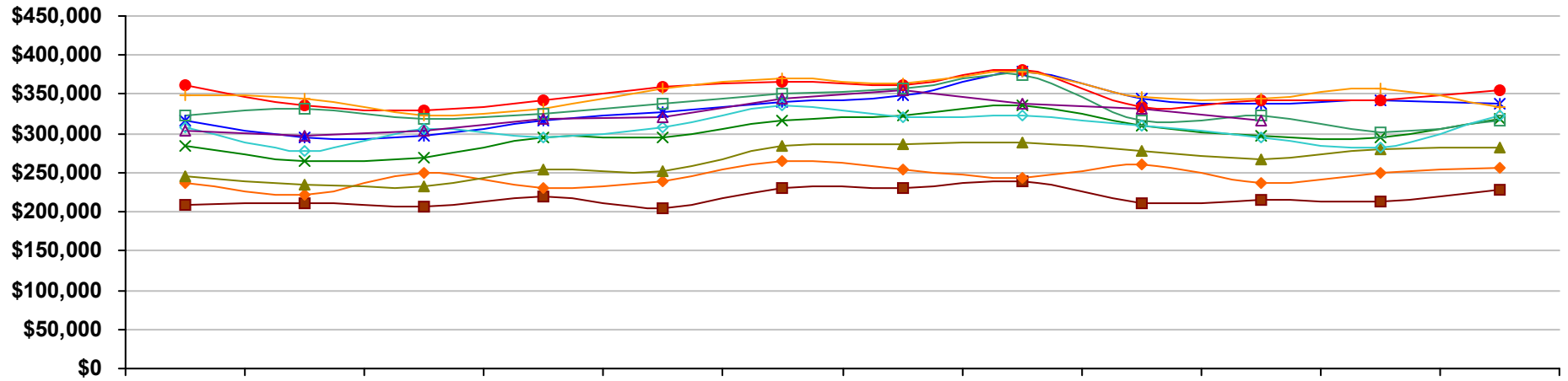
Values on this report are displayed in Millions

Montgomery County, PA - Single-Family - Median Settled Price



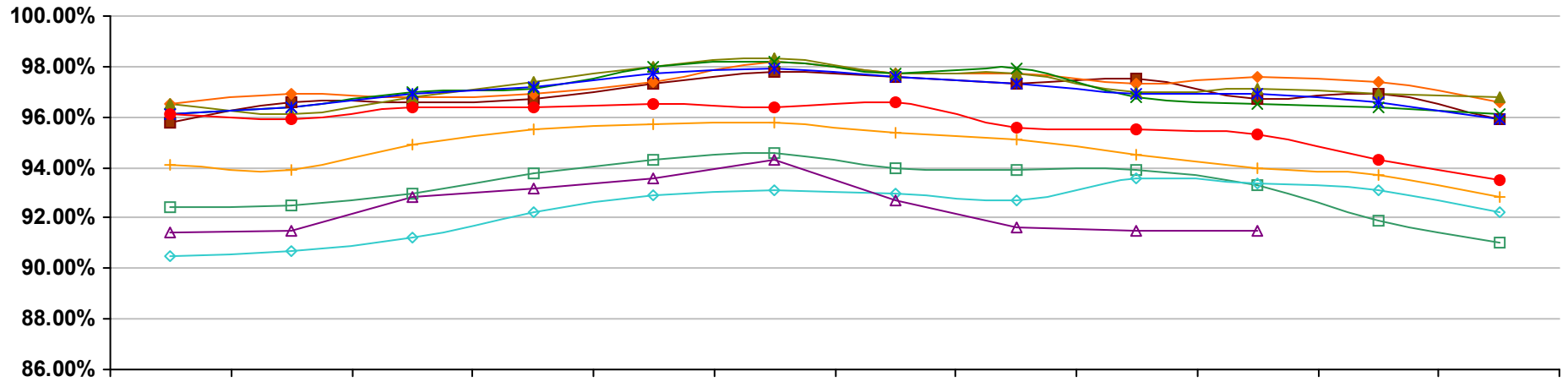
	Jan	Feb	Mar	Apr	May	Jun	Jul	Aug	Sep	Oct	Nov	Dec
■ 2001	\$162,000 3.8%	\$159,000 2.6%	\$158,000 6.0%	\$165,000 7.8%	\$165,000 10.0%	\$175,000 6.7%	\$176,000 10.0%	\$179,000 8.5%	\$165,000 5.8%	\$172,000 8.2%	\$170,000 7.6%	\$174,000 5.5%
◆ 2002	\$184,000 13.6%	\$173,000 8.8%	\$185,000 17.1%	\$185,000 12.1%	\$179,000 8.5%	\$198,000 13.1%	\$202,000 14.8%	\$195,000 8.9%	\$204,000 23.6%	\$192,000 11.6%	\$206,000 21.2%	\$209,000 20.1%
▲ 2003	\$200,000 8.7%	\$192,000 11.0%	\$200,000 8.1%	\$207,000 11.9%	\$210,000 17.3%	\$226,000 14.1%	\$233,000 15.3%	\$235,000 20.5%	\$227,000 11.3%	\$225,000 17.2%	\$229,000 11.2%	\$236,000 12.9%
✕ 2004	\$223,000 11.5%	\$210,000 9.4%	\$221,000 10.5%	\$240,000 15.9%	\$237,000 12.9%	\$259,000 14.6%	\$260,000 11.6%	\$265,000 12.8%	\$255,000 12.3%	\$255,000 13.3%	\$257,000 12.2%	\$255,000 8.1%
✱ 2005	\$250,000 12.1%	\$250,000 19.0%	\$255,000 15.4%	\$265,000 10.4%	\$265,000 11.8%	\$285,000 10.0%	\$286,000 10.0%	\$285,000 7.5%	\$291,000 14.1%	\$275,000 7.8%	\$284,000 10.5%	\$283,000 11.0%
● 2006	\$285,000 14.0%	\$268,000 7.2%	\$271,000 6.3%	\$280,000 5.7%	\$290,000 9.4%	\$300,000 5.3%	\$297,000 3.8%	\$306,000 7.4%	\$282,000 -3.1%	\$285,000 3.6%	\$280,000 -1.4%	\$288,000 1.8%
✚ 2007	\$290,000 1.8%	\$285,000 6.3%	\$275,000 1.5%	\$282,000 0.7%	\$283,000 -2.4%	\$298,000 -0.7%	\$299,000 0.7%	\$309,000 1.0%	\$284,000 0.7%	\$282,000 -1.1%	\$280,000 0.0%	\$276,000 -4.2%
▣ 2008	\$269,000 -7.2%	\$270,000 -5.3%	\$263,000 -4.4%	\$278,000 -1.4%	\$273,000 -3.5%	\$295,000 -1.0%	\$277,000 -7.4%	\$290,000 -6.1%	\$260,000 -8.5%	\$265,000 -6.0%	\$259,000 -7.5%	\$265,000 -4.0%
◇ 2009	\$250,000 -7.1%	\$237,000 -12.2%	\$247,000 -6.1%	\$252,000 -9.4%	\$259,000 -5.1%	\$275,000 -6.8%	\$270,000 -2.5%	\$265,000 -8.6%	\$260,000 0.0%	\$256,000 -3.4%	\$249,000 -3.9%	\$267,000 0.8%
△ 2010	\$258,000 3.2%	\$260,000 9.7%	\$265,000 7.3%	\$260,000 3.2%	\$260,000 0.4%	\$295,000 7.3%	\$296,000 9.6%	\$275,000 3.8%	\$282,000 8.5%	\$265,000 3.5%		

Montgomery County, PA - Single-Family - Average Settled Price



	Jan	Feb	Mar	Apr	May	Jun	Jul	Aug	Sep	Oct	Nov	Dec
2001	\$209,000 3.0%	\$210,000 7.1%	\$207,000 10.1%	\$219,000 19.0%	\$204,000 7.9%	\$231,000 6.9%	\$230,000 9.5%	\$240,000 13.2%	\$211,000 9.9%	\$216,000 7.5%	\$214,000 9.2%	\$228,000 9.1%
2002	\$236,000 12.9%	\$221,000 5.2%	\$249,000 20.3%	\$231,000 5.5%	\$239,000 17.2%	\$265,000 14.7%	\$255,000 10.9%	\$244,000 1.7%	\$261,000 23.7%	\$237,000 9.7%	\$250,000 16.8%	\$256,000 12.3%
2003	\$246,000 4.2%	\$234,000 5.9%	\$232,000 -6.8%	\$253,000 9.5%	\$251,000 5.0%	\$284,000 7.2%	\$287,000 12.5%	\$289,000 18.4%	\$277,000 6.1%	\$267,000 12.7%	\$279,000 11.6%	\$283,000 10.5%
2004	\$285,000 15.9%	\$264,000 12.8%	\$270,000 16.4%	\$294,000 16.2%	\$295,000 17.5%	\$317,000 11.6%	\$324,000 12.9%	\$336,000 16.3%	\$311,000 12.3%	\$298,000 11.6%	\$295,000 5.7%	\$318,000 12.4%
2005	\$316,000 10.9%	\$294,000 11.4%	\$298,000 10.4%	\$316,000 7.5%	\$328,000 11.2%	\$341,000 7.6%	\$348,000 7.4%	\$379,000 12.8%	\$344,000 10.6%	\$337,000 13.1%	\$342,000 15.9%	\$337,000 6.0%
2006	\$361,000 14.2%	\$336,000 14.3%	\$329,000 10.4%	\$343,000 8.5%	\$359,000 9.5%	\$365,000 7.0%	\$362,000 4.0%	\$382,000 0.8%	\$334,000 -2.9%	\$343,000 1.8%	\$342,000 0.0%	\$355,000 5.3%
2007	\$349,000 -3.3%	\$345,000 2.7%	\$324,000 -1.5%	\$332,000 -3.2%	\$358,000 -0.3%	\$371,000 1.6%	\$364,000 0.6%	\$380,000 -0.5%	\$347,000 3.9%	\$345,000 0.6%	\$358,000 4.7%	\$333,000 -6.2%
2008	\$323,000 -7.4%	\$332,000 -3.8%	\$318,000 -1.9%	\$326,000 -1.8%	\$337,000 -5.9%	\$352,000 -5.1%	\$358,000 -1.6%	\$375,000 -1.3%	\$317,000 -8.6%	\$323,000 -6.4%	\$302,000 -15.6%	\$317,000 -4.8%
2009	\$308,000 -4.6%	\$278,000 -16.3%	\$306,000 -3.8%	\$294,000 -9.8%	\$307,000 -8.9%	\$335,000 -4.8%	\$320,000 -10.6%	\$323,000 -13.9%	\$310,000 -2.2%	\$295,000 -8.7%	\$283,000 -6.3%	\$322,000 1.6%
2010	\$304,000 -1.3%	\$297,000 6.8%	\$304,000 -0.7%	\$319,000 8.5%	\$320,000 4.2%	\$345,000 3.0%	\$356,000 11.2%	\$339,000 5.0%	\$331,000 6.8%	\$316,000 7.1%		

Montgomery County, PA - Single-Family - Average Settled Price/Original Price



	Jan	Feb	Mar	Apr	May	Jun	Jul	Aug	Sep	Oct	Nov	Dec
2001	95.8% 0.1%	96.6% 0.8%	96.6% 0.7%	96.7% 0.8%	97.3% 1.0%	97.8% 0.7%	97.6% 0.9%	97.3% 0.4%	97.5% 1.0%	96.7% 0.7%	96.9% 0.9%	95.9% 0.2%
2002	96.5% 0.7%	96.9% 0.4%	96.8% 0.3%	96.9% 0.3%	97.4% 0.1%	98.2% 0.4%	97.7% 0.1%	97.7% 0.5%	97.3% -0.2%	97.6% 0.9%	97.4% 0.5%	96.6% 0.8%
2003	96.5% 0.0%	96.1% -0.9%	96.8% -0.1%	97.4% 0.5%	98.0% 0.6%	98.3% 0.1%	97.7% 0.0%	97.7% 0.0%	97.0% -0.3%	97.1% -0.5%	96.9% -0.5%	96.8% 0.2%
2004	96.1% -0.4%	96.4% 0.3%	97.0% 0.3%	97.1% -0.3%	98.0% 0.1%	98.2% -0.1%	97.7% 0.0%	97.9% 0.2%	96.8% -0.2%	96.5% -0.6%	96.4% -0.5%	96.1% -0.7%
2005	96.1% 0.0%	96.4% 0.1%	96.9% -0.2%	97.2% 0.1%	97.7% -0.3%	97.9% -0.2%	97.6% -0.1%	97.3% -0.6%	96.9% 0.1%	96.9% 0.5%	96.6% 0.2%	95.9% -0.2%
2006	96.1% 0.0%	95.9% -0.5%	96.4% -0.5%	96.4% -0.8%	96.5% -1.2%	96.4% -1.5%	96.6% -1.0%	95.6% -1.7%	95.5% -1.5%	95.3% -1.7%	94.3% -2.4%	93.5% -2.5%
2007	94.1% -2.1%	93.9% -2.1%	94.9% -1.6%	95.5% -1.0%	95.7% -0.9%	95.8% -0.7%	95.4% -1.2%	95.1% -0.6%	94.5% -1.0%	94.0% -1.4%	93.7% -0.7%	92.8% -0.8%
2008	92.4% -1.8%	92.5% -1.5%	93.0% -1.9%	93.8% -1.8%	94.3% -1.4%	94.6% -1.3%	94.0% -1.5%	93.9% -1.2%	93.9% -0.6%	93.3% -0.7%	91.9% -1.8%	91.0% -1.9%
2009	90.5% -2.1%	90.7% -2.0%	91.2% -2.0%	92.2% -1.7%	92.9% -1.5%	93.1% -1.5%	93.0% -1.1%	92.7% -1.2%	93.6% -0.4%	93.4% 0.1%	93.1% 1.3%	92.2% 1.3%
2010	91.4% 1.0%	91.5% 0.9%	92.8% 1.8%	93.2% 1.1%	93.6% 0.8%	94.3% 1.3%	92.7% -0.3%	91.6% -1.2%	91.5% -2.3%	91.5% -2.0%		